

Provisional road deaths for Q2 2022:*

100
(Up from 87 in Q1)

Road deaths for Q2 average 2018-22:*

90

On average, one person is killed every day on New Zealand roads, and another seven are seriously injured. Each and every one of the lives lost and people injured on our roads is a devastating tragedy, that has a lasting impact on our communities.

Road to Zero is our plan to build the safest road system we can, and work towards zero deaths and serious injuries on Aotearoa New Zealand roads.

Road to Zero is not about any single initiative but about how we develop a Safe System that includes safe vehicles, safe speeds, safe road users and safe roads. A safe system approach means looking at all aspects of the transport system and making evidence based interventions across a wide range of activity to make a difference.

Road to Zero – quarterly insights June 2022 highlights progress across a number of areas across the full system response. Each of these has a part to play in contributing to Road to Zero.

Every New Zealander has a role to play. It takes everyone to get to no one – Mā tātou e kore tētahi e hinga.

* Data from MOT website

65km Median barriers completed to date. 4km this this quarter.

10,940km Speed treatments completed to date.

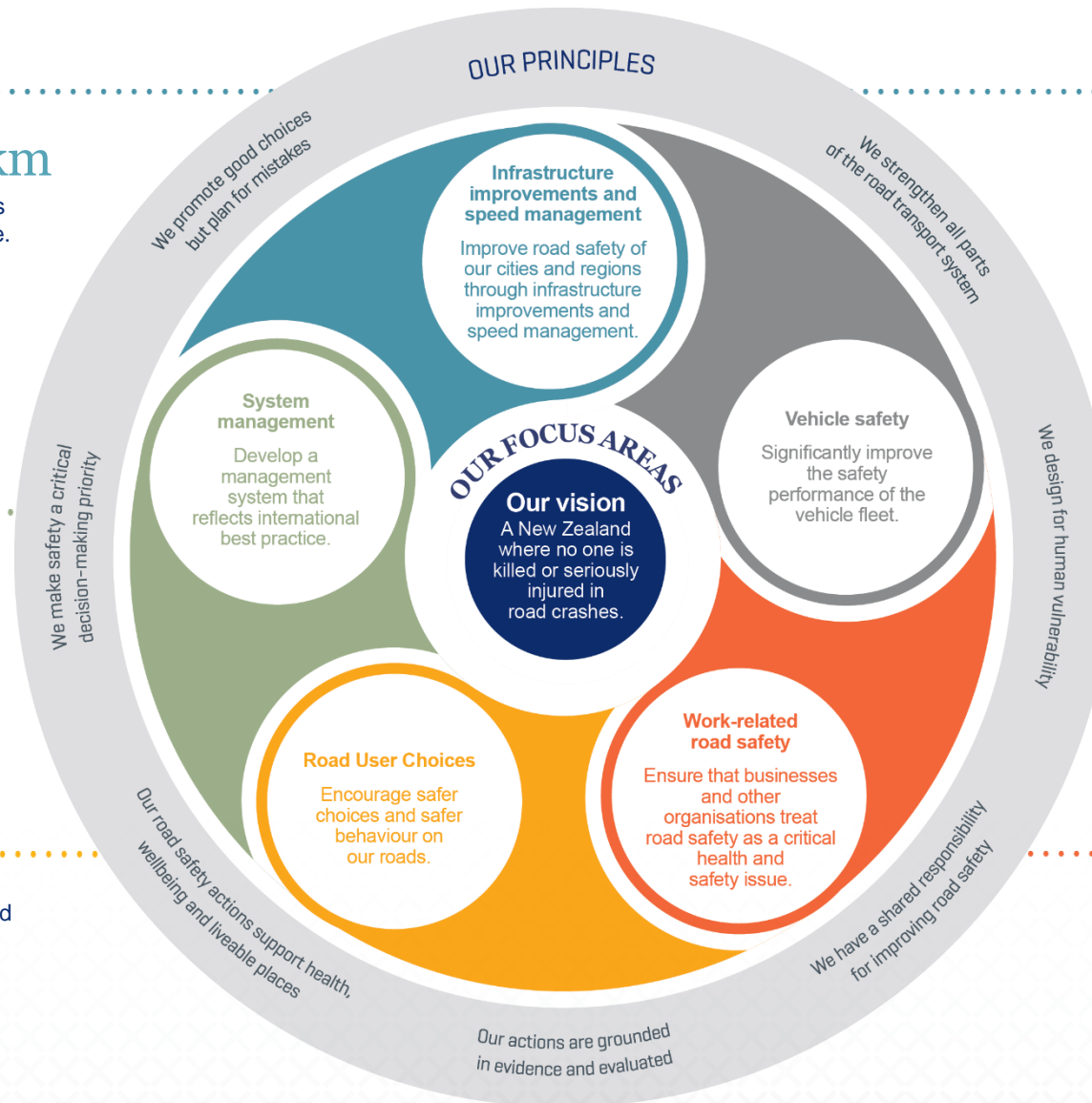
Governance

Establishment the Road to Zero Deputy Chief Executive Management Group.

Establishment of the System Management Advisory Group led by Waka Kotahi.

Release of the 2021 Road to Zero Annual Monitoring Report.

As of June 2022, Police had conducted **1,592,286** breath tests for the 2021/ 22 year.



Policy work

The new Land Transport Rule: Setting of Speed Limits 2022 came into effect on 19 May 2022.

Speed Rule Guide approved and published.

Establishment of the Speed Review Governance Group to support and endorse speed reviews.

Te Manatū Waka is developing advice on an approach for the review of the vehicle standards regulatory framework.

A business case is being developed that proposes to establish a road safety partnership between Government and Industry to collaborate on evidence based interventions to tackle key risks of harm in work related road safety.