

MARITIME SECURITY STRATEGY

Guardianship of Aotearoa
New Zealand's Maritime Waters

Te Kaitiakitanga o

Tangaroa 2020

Overview of the Maritime Security Strategy

Increasing pressure on New Zealand's maritime security demands a new vision and approach for the maritime security sector

The Vision

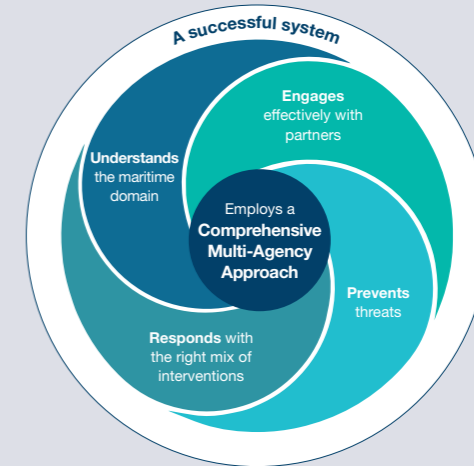
A maritime security sector that secures New Zealand's significant maritime economic, cultural and environmental interests, is better able to deter adversaries, reduce harm to New Zealand communities and exert effective Kaitiakitanga (guardianship) of the sea.

The Approach

The maritime security sector's contribution to national security will be guided by four interlocking pillars: Understand, Engage, Prevent, Respond.

These pillars describe how an efficient and effective system goes about achieving maritime security.

The pillars are underpinned by two supporting principles: The comprehensive multi-agency approach and Kaitiakitanga.



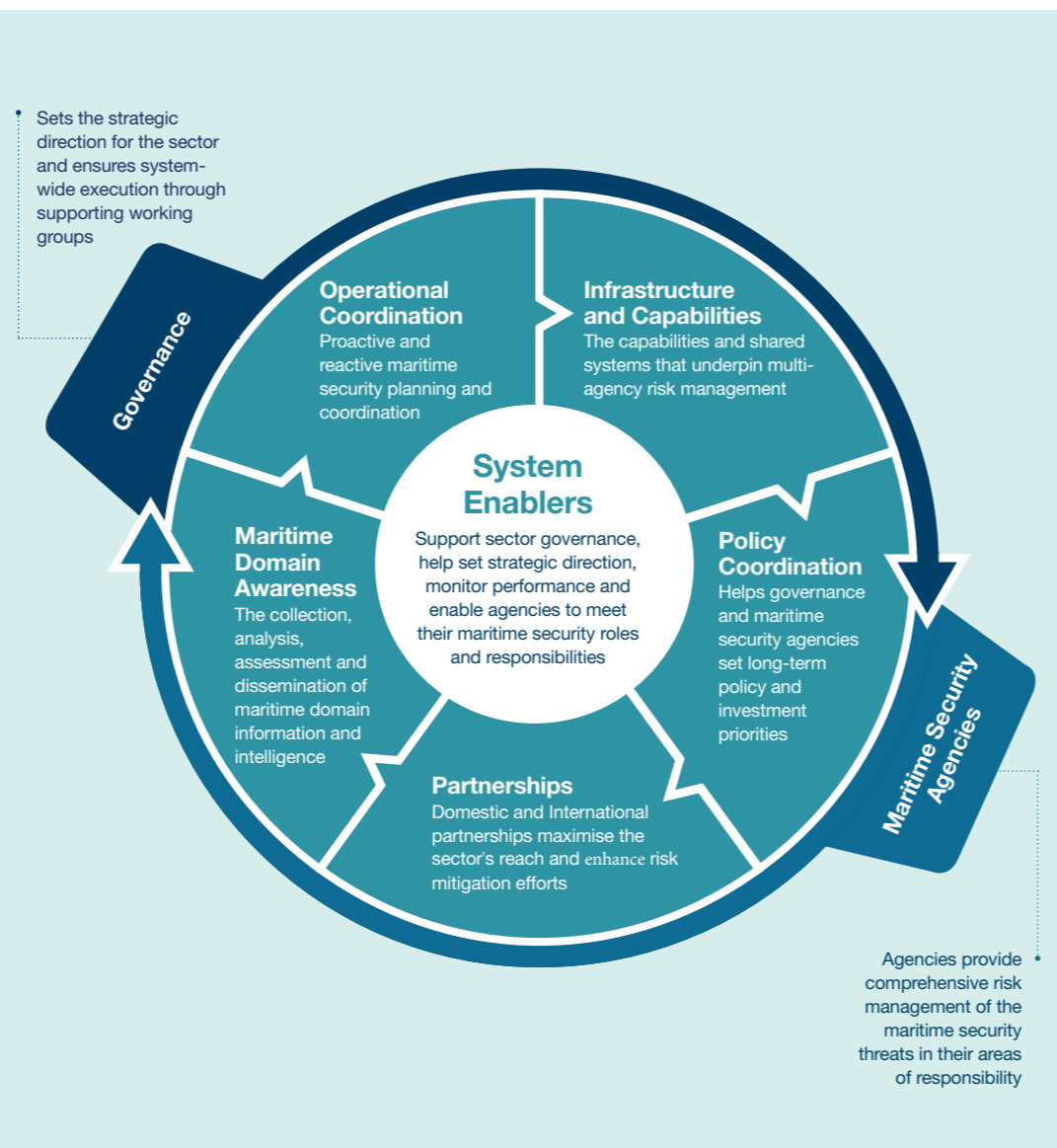
Kaitiakitanga

New Zealand's stewardship and protection of our maritime domain for future generations.

The Future Maritime Security System

Achieved by

Implementation Priorities



Priority 1

Enable the comprehensive multi-agency response

- Assign a lead maritime security policy agency.
- Establish sufficient policy coordination, assessment, communications and campaign planning capacity and capability.
- Provide funding certainty.

Priority 2

Establish sector planning and assessment expectations

- A Maritime Security Assessment that identifies emerging threats and opportunities.
- A Campaign Plan that sets an integrated approach to the deployment of resources.

Priority 3

Coordinated investment across the sector

- Determine the approach to investing in the right mix of people, systems and tools to achieve best effect.

A layered approach to investment

People

We need people with the skills to understand the maritime environment, engage with domestic and international partners, develop and implement proactive approaches.

Systems

All elements need to work from a single point of truth (a "common operating picture"). This requires networked systems that support collaborative planning based on a shared understanding.

Tools

Investment in fit for the future surveillance and analytical capabilities. Ensuring New Zealand continues to have suitable and sufficient maritime response capabilities.

Roles and Responsibilities

This table is provided as a guide and is likely to evolve as lessons are identified during real world issues and government sponsored exercises. Suggestions for amendment will be considered by MSOC for occasional Strategy amendments.

| | THREAT / INTEREST | POLICY / STRATEGY | | INTELLIGENCE | | OPERATIONAL DELIVERY | |
|---|--|--|---|-------------------------------|---|----------------------------|---|
| | | LEAD | SUPPORT | LEAD | SUPPORT | LEAD | SUPPORT |
| SECTOR GOVERNANCE AND COORDINATION | Maritime Security | Ministry of Transport | MSOC Agencies | NMCC | MSOC Agencies | Maritime Security Agencies | NMCC |
| | Prohibited Imports and Exports | NZ Customs | NZ Police, NZIC, MFAT, DPMC, MOD | NZ Customs | NZIC, NZ Police, NDIB, MBIE, NZDF, MNZ, GNZ, NMCC, ITOC | NZ Customs | NZ Police, NMCC, MNZ, ITOC |
| MARITIME SECURITY THREATS AND INTERESTS | Prevention of a maritime mass arrival | MBIE (INZ) | DPMC, MOD, NZDF, MFAT, NZ Customs, NZIC, Police, MOH | MBIE | NZIC, MFAT, NZ Police, NZ Customs, NZDF, GNZ, NMCC, MOH | MBIE (INZ) | MFAT, NZDF, NZ Customs, NZ Police, NMCC, RCCNZ, MNZ |
| | Response to a maritime mass arrival in New Zealand | MBIE (INZ) | DPMC, MOD, NZDF, MFAT, NZ Customs, NZIC, MOH | MBIE | NZIC, MFAT, NZ Police, NZ Customs, NZDF, GNZ, NMCC, MOH | MBIE (INZ) | NZDF, NZ Customs, NZ Police, NMCC, RCCNZ, MOD; Health, MPI, Justice, Corrections, MSD, Oranga Tamariki, MFAT, MNZ |
| | Biosecurity | MPI | DPMC, MOD, MFAT, MFE, MNZ | MPI | NZIC, NZ Police, NZ Customs, NZDF, GNZ, NMCC, MNZ | MPI | NZDF, NZ Police, EPA, MNZ, NMCC, MNZ |
| | Human Communicable Diseases (quarantine) | MOH | MOT, MFAT, NZ Customs, MBIE, MNZ | NZ Customs | MOT, MFAT, MBIE, MNZ | DHB | NZ Customs, MNZ, NZ Police, NMCC |
| | Illegal, Unregulated and Unreported fishing | MPI | DPMC, MOD, MFAT, MFE | MPI | NZIC, NZ Police, NZ Customs, NZDF, GNZ | MPI | NZDF, MNZ, NMCC |
| | Illegal or poorly regulated exploitation of non-living resources | MFE | MBIE, MFAT, MOD, EPA, NZ Police, MNZ | EPA | NMCC, MFAT, MBIE, GNZ, NZ Police | EPA | NMCC, NZ Police, NZDF, MNZ local authorities |
| | Threats to protected species | DOC | NZ Police, MFAT, MFE, MOD | DOC | NMCC, MFAT, NZ Police, MPI | DOC | NMCC, NZ Police, NZDF |
| | Illegal activity in protected areas | DOC | NZ Police, MFAT, MFE, MOD, MPI, MOT | DOC | NMCC, MFAT, NZ Police, MPI, MNZ | DOC | NMCC, NZDF, NZ Police, MPI, MNZ |
| | Illegal interference of Maritime Infrastructure | MBIE | NZ Police, MFE, MFAT, DPMC, MOD, MNZ | NZ Police | NMCC, NZIC, MNZ, MBIE | NZ Police | NMCC, NZDF, NZ Police, MNZ, NZ Customs |
| | Piracy, robbery, violence in international waters | MOT | MFAT, NZ Police, NZDF, MOD, MNZ | NZIC | NZ Police, DPMC, NZ Customs, NZDF, MPI | NZDF | NZ Police, NMCC |
| | Crime in territorial waters | MOJ | NZDF, DPMC, MFAT, MOD, MNZ, NZ Police | NZ Police | NZ Police, DPMC, NZ Customs, MPI | NZ Police | NZDF, NZ Customs, NMCC |
| | Security threats to Ports or NZ Flagged Vessels | MOT | MNZ, NZ Police, NZDF, NZIC, DPMC, MOD | MNZ | NZ Police, NZIC, NZDF, NZ Police, NMCC | MNZ | NZDF, NZ Police, NZ Customs, NMCC |
| | Illegal marine pollution | MOT | MNZ, MBIE, DOC, MPI, NZ Police, MFE | MNZ | EPA, NMCC, NZ Police, NZDF, DOC, MPI | MNZ | EPA, NMCC, NZ Police, NZDF, DOC, MPI, local authorities |
| | Maritime Safety and Emergencies (including oil response) | MOT | DPMC, NEMA, MOD, NZDF, MFAT, MFE, FENZ, MBIE | MNZ | MPI, MBIE, EPA, RCCNZ, NMCC, GNZ, FENZ | MNZ | NZDF, EPA, RCCNZ, MPI, NEMA, Emergency Task-Force (MFAT), local authorities, FENZ |
| | Maritime Search and Rescue | MOT | NZSAR Secretariat, MNZ, NZ SAR Council, NZDF, MFAT, MFE, NZ Police, MOD | MNZ | RCCNZ, NMCC, NZDF | RCCNZ | NZDF, NZ Police, MNZ, NMCC, local authorities |
| | Defence of New Zealand's sovereignty and territorial integrity | MOD | NZ Police, NZDF, NZIC, DPMC, MFAT, MOD | NZDF | NZIC, DPMC, MFAT, GNZ | NZDF | NZ Customs, NMCC, NZ Police |
| | Promotion and Support of the Maritime Rules Based Order | MFAT | DPMC, MOD, MFE, MPI, NZ Customs, MNZ | NZIC | NZDF, MFAT, DPMC, NZ Customs, MNZ, NMCC | Maritime Security Agencies | NMCC, HQJFNZ |
| | South Pacific | MFAT | DPMC, MOD, MFE, MPI, NZ Customs, NZ Police | NZIC | NZDF, NZ Police, DPMC, MPI, NZ Customs, NMCC | Maritime Security Agencies | RCCNZ, HQJFNZ, Emergency Task-Force (MFAT), NMCC |
| Southern Ocean | MFAT | DPMC, MOD, MFE, MPI, NZ Customs, Antarctic NZ, NZ Police | NZIC | MPI, NZDF, Antarctic NZ, NMCC | Maritime Security Agencies | RCCNZ, HQJFNZ, NMCC | |

POLICY LEAD
The Agency responsible for administering the most relevant legislation and providing policy advice to the Executive Branch.

INTELLIGENCE LEAD
The Agency responsible for ensuring that the National Security System and lead policy agency is across relevant threats, hazards and levels of risk.

OPERATIONAL LEAD
The main agency responsible for leading and coordinating the operational (on the ground action) response.